

**ACADEMIC PROGRESS MONITORING AND
EVALUATION REPORTS**

2022



**MEDICAL DOCTOR PROFESSION EDUCATION PROGRAMME
FACULTY OF MEDICINE SYIAH KUALA UNIVERSITY**

2023

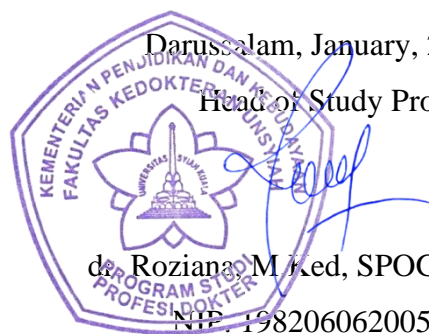
VALIDITY SHEET

ACADEMIC PROGRESS MONITORING AND EVALUATION REPORTS

2022

Darussalam, January, 21th, 2023

Head of Study Program



d. Roziana M Ked, SPOG-K UroginRE

NIP. 198206062005012004

CONTENTS OF THE REPORT:

1. INTRODUCTION

- a) Background
- b) Purpose
- c) Benefits

2. SURVEY/MONEV METHOD

- a) Instruments used
- b) Respondents

3. REPORT ON THE RESULTS OF SURVEY IMPLEMENTATION

- a) Survey/Monev results
- b) Achievement of Conformity with Related SN-DIKTI KPI and IKT
- c) Survey/Monev Findings
- d) Exceeding of Related SN-DIKTI

4. FOLLOW UP

- a) Problems
- b) Root Problems (Causes)
- c) Driving Factors
- d) Inhibiting Factors
- e) Control
- f) Follow-up Plan

5. RECOMMENDATION

1. INTRODUCTION

A. Background

The learning process on campus is believed to be one of the main factors influencing student grade point average scores. In addition, there are several other factors that can affect students' GPA scores, both internal and external factors.

In tertiary institutions, to see the success of a student's learning process can be known by the grade point average (GPA). The Grade Point Average is the average credit score which is the final unit that describes the value of the learning process each semester or can also be interpreted as a quantity or number that states the achievement of success in the student learning process in one semester. Students who get a high grade point average indicate that these students are able to attend lectures well, and vice versa.

The activity of monitoring the results of the learning process in the form of IP scores is carried out by the Doctor Profession Study Program in the 2021/2022 academic year. then it will be carried out periodically every year to see the development of student learning outcomes in the Medical Profession Study Program, Faculty of Medicine, Syiah Kuala University.

B. Purpose

The purpose of monitoring the results of this learning process is:

1. To find out whether the Doctor Professional Study Program has met national standards in achieving a minimum IP score per semester.
2. To find out the success pattern of the learning process carried out by the Doctor Profession Study Program based on students' GPA scores per semester.
3. So that it can be used as input for study programs in conducting selfevaluations, establishing follow-up plans, planning, determining continuous implementation to improve the learning process so that students can achieve the expected IP value.

C. Benefit

The results of this evaluation monitoring activity are expected to be used by faculty/university leaders as policy makers to implement them improving the quality of learning in general. In addition, the description of the results of data analysis can also be used for improvement and study program development plans. Money data is also expected to be able to motivate lecturers and students to apply learning, so that

the increase in lecturer professionalism and teaching quality can continue to be implemented in a sustainable manner. Monev data can also be an inspiration for students.

2. SURVEI/MONEV METHODS

a) Instruments used

Data collection was carried out by examining documents which were then recapitulated and processed by the study program. the results are submitted to the Internal Quality Audit Team (AMI) for further analysis.

b) Respondents

The data collected is data from the students of the Medical Professional Education Study Program, Faculty of Medicine, University of Syiah Kuala who have completed their medical profession studies

3. REPORT ON THE RESULTS OF MONITORING AND EVALUATION IMPLEMENTATION

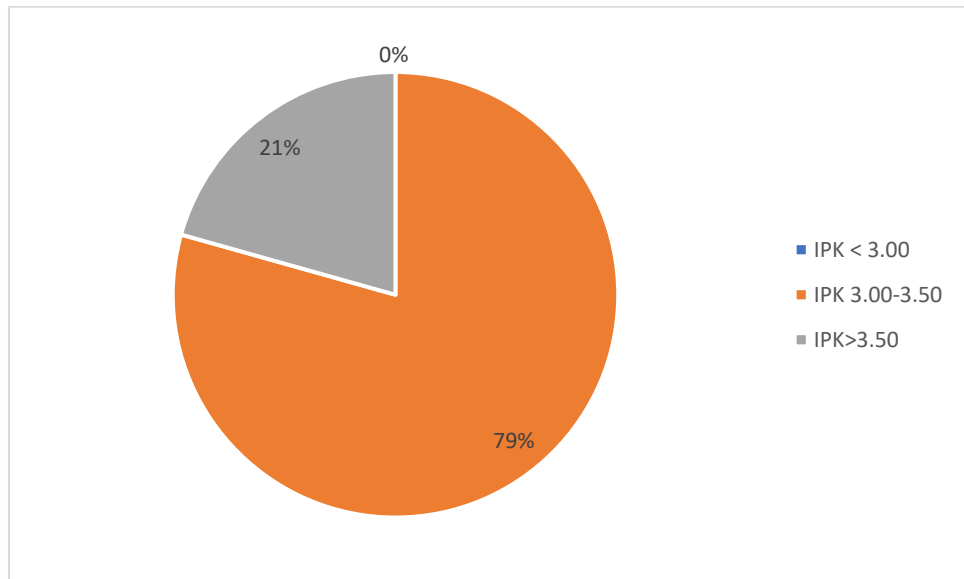
a) Survey/Monev results

Results of Monitoring and Evaluation of learning outcomes for 2021/2022

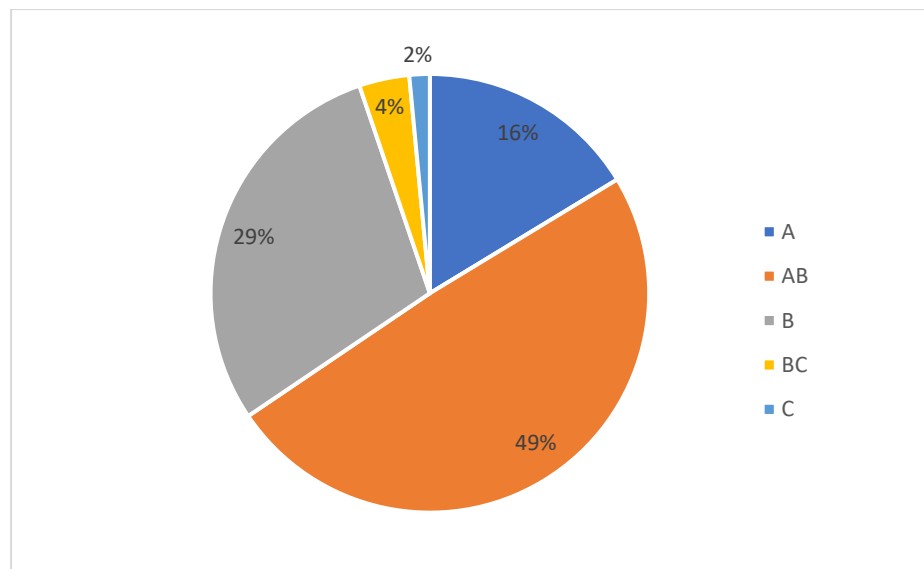
Table 1. Monev Report on Learning Outcomes for the 2021/2022 academic year

No	Criteria	Amount
1	GPA average	3.31
2	Percentage of GPA < 3.00	0
3	Percentage of GPA 3.00-3.50	79%
4	Percentage of GPA > 3.50	21%
5	Percentage score A	16%
6	Percentage score AB	49%
7	Percentage score B	29%
8	Percentage score BC	4%
9	Percentage score C	2%
10	Study Period	2 years 2 months
11	Number of Graduates	155 students

Based on table 1. it can be seen that the average GPA in 2021/2022 is 3.31. The percentage of Grade Point Average (GPA) whose value is below 3.00 is 0%. The percentage of GPA whose value is between 3.00-3.50 is obtained at 92%. Furthermore, the percentage of GPA above 3.50 was obtained, which was 21%. The percentage of the Score A is 16%, Score AB is 49%, Score B is 29%, Score BC is 4% and the percentage of the score of C is 2%. The number of students who graduated was 155 students. Can be seen in Figure 1 dan figure 2 below:



In diagram 1 it can be seen that the percentage of the Cumulative Grade Point Average for the 2021/2022

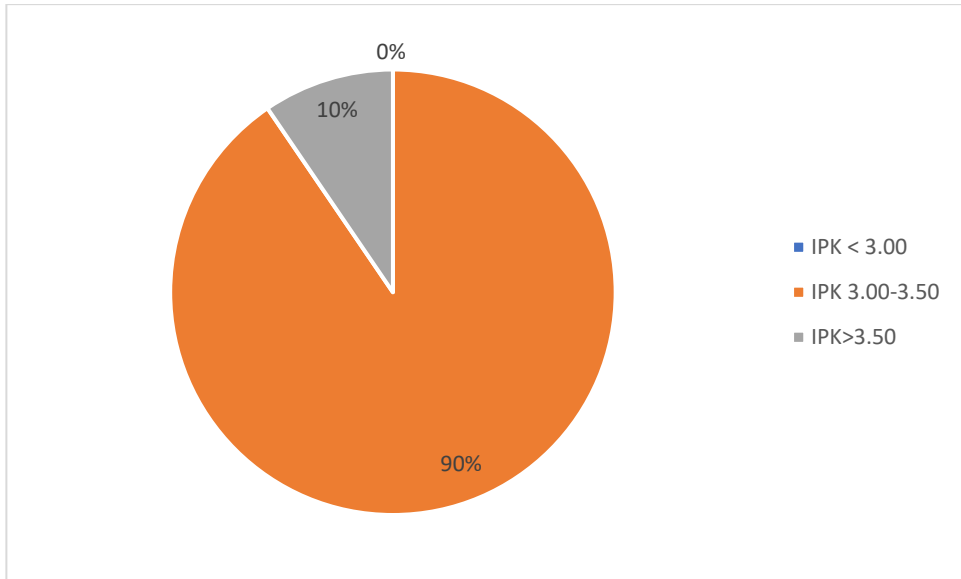


In diagram 2 it can be seen that the percentage of score in the 2021/2022

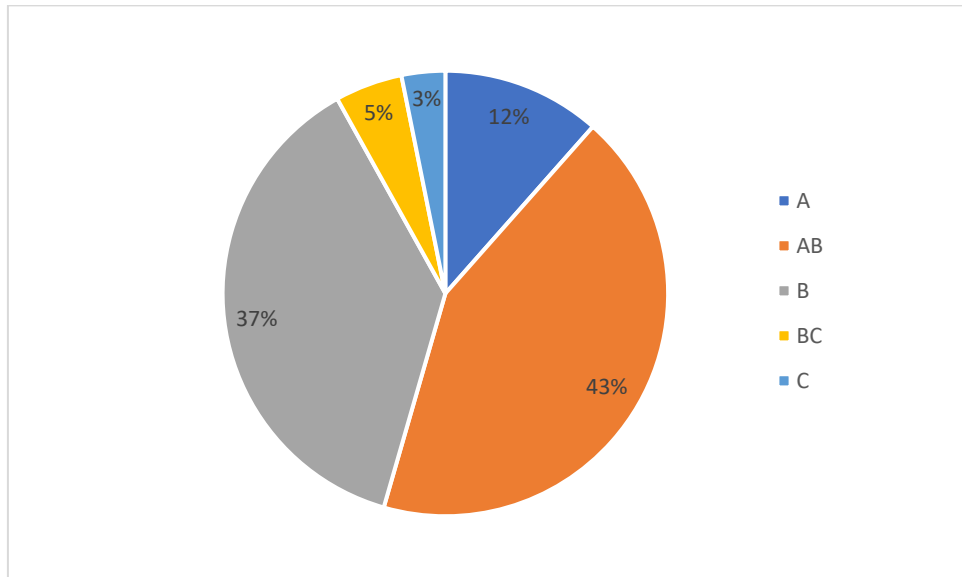
1. Results of Monitoring and Evaluation of UKMPPD learning outcomes for the February 2022 period.

No	Criteria	amount
1	GPA average	3.27
2	Percentage of GPA < 3.00	0
3	Percentage of GPA 3.00-3.50	90%
4	Percentage of GPA > 3.50	10%
5	Percentage score A	12%
6	Percentage score AB	43%
7	Percentage score B	37%
8	Percentage score BC	5%
9	Percentage score C	3%
10	Study Period	2 years 4 months
11	Number of Graduates	21 students

Based on the table above, it can be seen that the average IP for the February 2022 period was 3.27. For the percentage of IP whose value is below 3.00 it is obtained at 0%. The percentage of GPA whose value is between 3.00-3.50 is obtained at 90%. Furthermore, the percentage of GPA above 3.50 is obtained, which is 10%. The percentage of the Score A is 12%, Score AB is 43%, Score B is 37%, Score BC is 5% and the percentage of the score of C is 3%. The number of students who graduated was 21 students. Furthermore, the percentage of IP results for the February 2022 period can be seen in the following figure:



In the diagram 3 above it can be seen that the percentage of the semester GPA for the February 2022

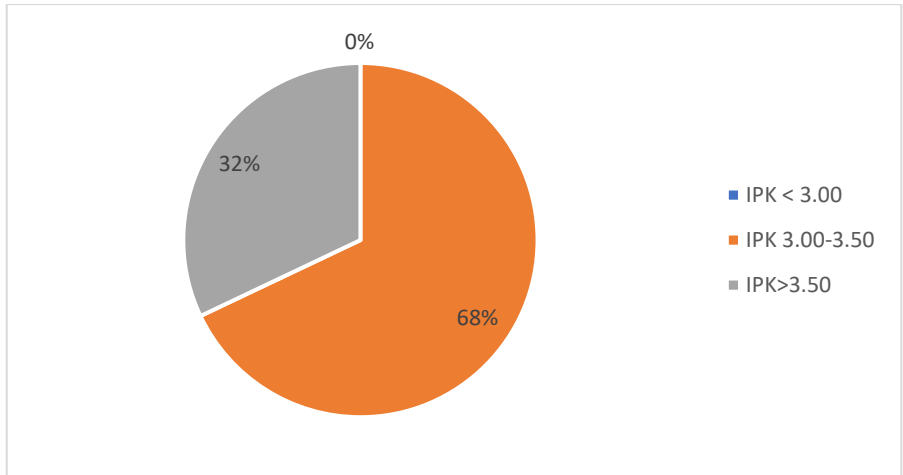


In diagram 4 it can be seen that the percentage of score for the February 2022

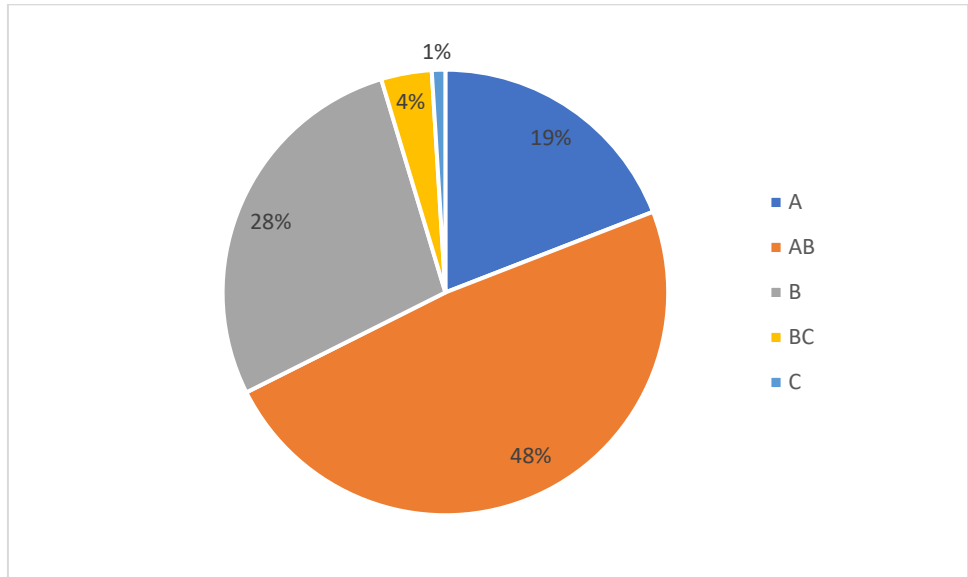
2. Results of Monitoring and Evaluation of UKMPPD learning outcomes for the May 2022 period

No	Criteria	Amount
1	GPA average	3.36
2	Percentage of GPA < 3.00	0
3	Percentage of GPA 3.00-3.50	68%
4	Percentage of GPA > 3.50	32%
5	Percentage score A	19%
6	Percentage score AB	48%
7	Percentage score B	28 %
8	Percentage score BC	4%
9	Percentage score C	1%
10	Study Period	2 years 4 months
11	Number of Graduates	78 students

Based on the table above, it can be seen that the average IP for the May 2022 period was 3.36. For the percentage of IP whose value is below 3.00 it is obtained at 0%. The percentage of GPA whose value is between 3.00-3.50 is obtained at 68%. Furthermore, the percentage of GPA above 3.50 was obtained, which was 32%. The percentage of the Score A is 19%, Score AB is 48%, Score B is 28%, Score BC is 4% and the percentage of the score of C is 1%. The number of students who graduated was 78 students. Furthermore, the percentage of IP results for the May 2022 period can be seen in the following figure::



In the diagram 5 above, it can be seen that the percentage of the semester GPA for the May 2022 period

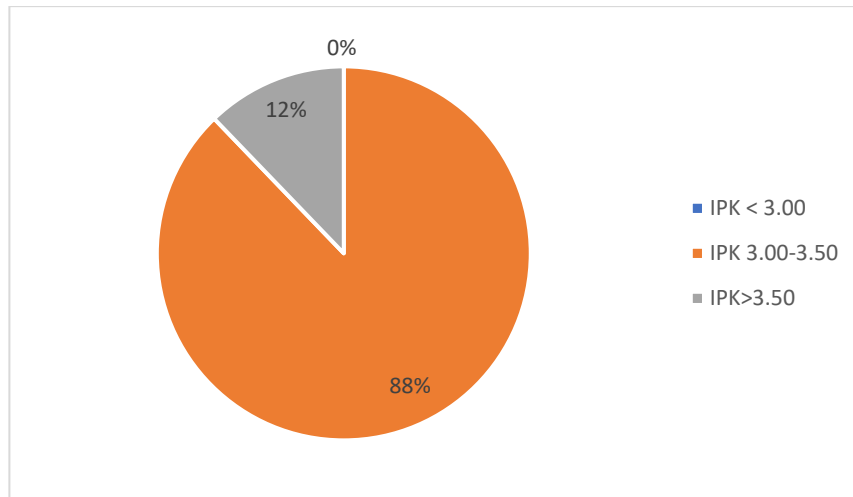


In diagram 6 it can be seen that the percentage of score for the May 2022

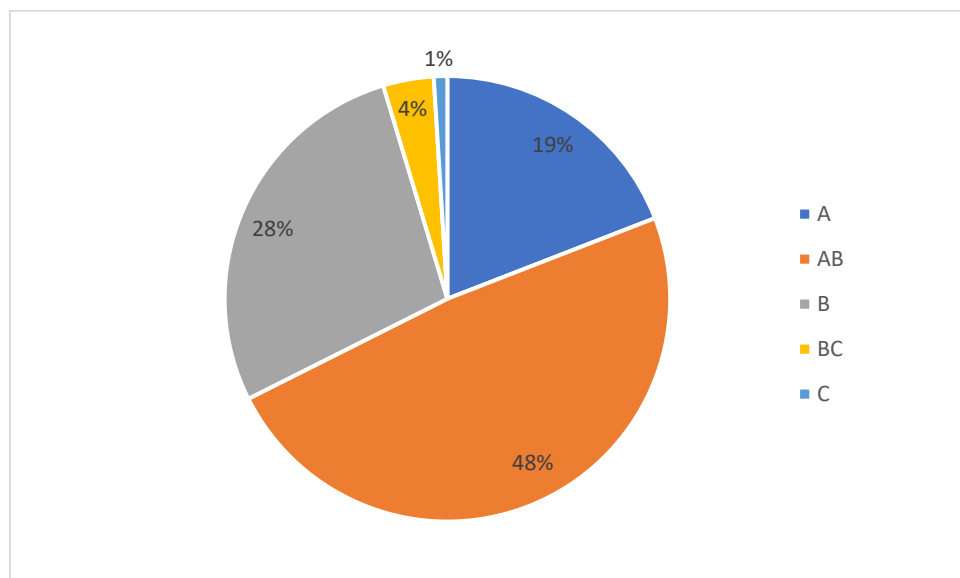
3. Results of Monitoring and Evaluation of UKMPPD learning outcomes for the August 2022 period

No	Criteria	Jumlah
1	GPA average	3.36
2	Percentage of GPA < 3.00	0
3	Percentage of GPA 3.00-3.50	88%
4	Percentage of GPA > 3.50	12%
5	Percentage score A	19%
6	Percentage score AB	48%
7	Percentage score B	28%
8	Percentage score BC	4%
9	Percentage score C	1%
10	Study Period	2 Years 4 months
11	Number of Graduates	41 students

Based on the table above, it can be seen that the average IP for the August 2022 period is 3.36. For the percentage of IP whose value is below 3.00 it is obtained at 0%. The percentage of GPA whose value is between 3.00-3.50 is 88%. Furthermore, the percentage of GPA above 3.50 was obtained, which was 12%. The percentage of the Score A is 19%, Score AB is 48%, Score B is 28%, Score BC is 4% and the percentage of the score of C is 1%. The number of students who graduated was 41 students. Furthermore, the percentage of IP results for the August 2022 period can be seen in the following figure:



In the diagram 7 above it can be seen that the percentage of the semester GPA for the August 2022 period

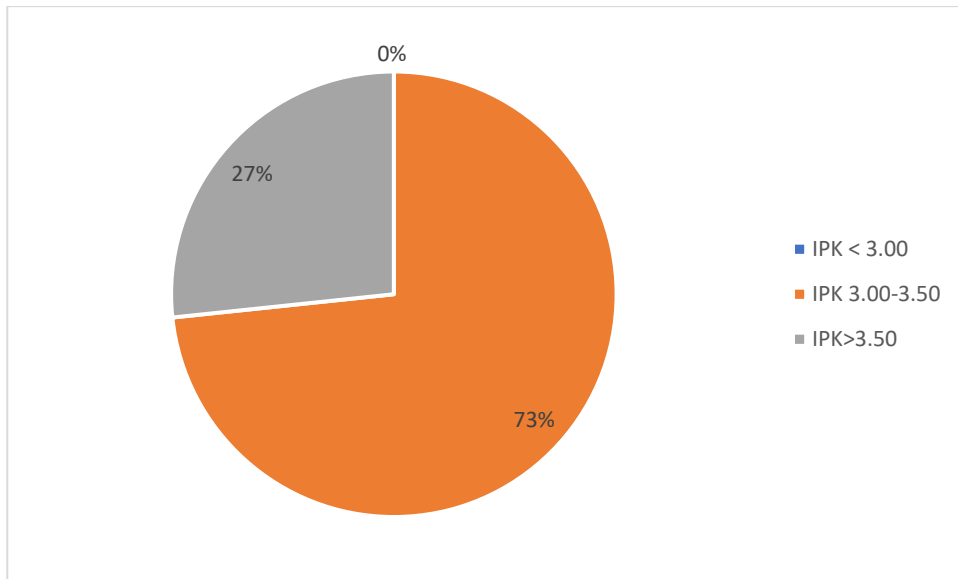


In diagram 8 it can be seen that the percentage of score for the May 2022

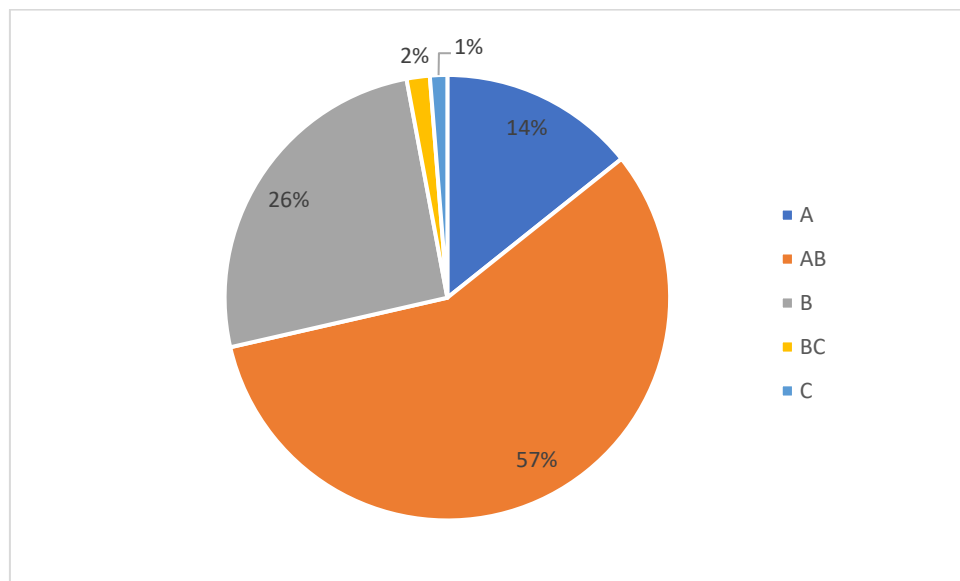
4. Results of Monitoring and Evaluation of UKMPPD learning outcomes for the November 2022 period

No	Criteria	Jumlah
1	GPA average	3.29
2	Percentage of GPA < 3.00	0
3	Percentage of GPA 3.00-3.50	73%
4	Percentage of GPA > 3.50	27%
5	Percentage score A	14 %
6	Percentage score AB	57%
7	Percentage score B	26%
8	Percentage score BC	2%
9	Percentage score C	1%
10	Study Period	2 Years 2 Months
11	Number of Graduates	15 students

Based on the table above, it can be seen that the average IP for the November 2022 period is 3.29. For the percentage of IP whose value is below 3.00 it is obtained at 0%. The percentage of GPA whose value is between 3.00-3.50 is obtained at 73%. Furthermore, the percentage of GPA above 3.50 was obtained, which was 27%. The percentage of the Score A is 14%, Score AB is 57%, Score B is 26%, Score BC is 2% and the percentage of the score of C is 1%. The number of students who graduated was 15 students. Furthermore, the percentage of IP results for the November 2022 period can be seen in the following figure:



In the diagram 9 above, it can be seen that the percentage of the November 2022 period



In diagram 8 it can be seen that the percentage of score for the November 2022

b) Achievement of Conformity with Related SN-DIKTI KPI and IKT

The Medical Professional Education Study Program at the Faculty of Medicine, Syiah Kuala University has implemented SPMI as evidenced by the existence of 5 aspects (SPMI Organs/Functions, SPMI Documents, Internal Auditors, Audit Results and Follow-up Evidence), has standards that go beyond those of SN-DIKTI, and implementing a risk-based SPMI (Risk Based Audit) or other innovations

c) Findings of Money Results

The average GPA value of students still shows fluctuations for which the cause cannot be known, in general it has decreased and increased from each semester, although not significantly increased.

d) Exceeding of Related SN-DIKTI

The Medical Professional Education Study Program at the Faculty of Medicine, Syiah Kuala University has fulfilled the requirements stated in the National Standards for higher education. The National Education Standards consist of: graduate competency standards; Learning content standards; learning process standards; Learning education assessment standards; Lecturer and Education Personnel standards; Learning facilities and infrastructure standards; Learning management standards; and Learning financing standards.

The National Education Standards referred to above serve as a reference in compiling, implementing, and evaluating the USK Medical Doctors Professional Education Curriculum.

4. FOLLOW UP

a) Problem

1. Many supporting activities are implemented but not optimal
2. The prolonged Covid-19 pandemic has affected the teaching and learning process. Especially for modules with elective measures, the number of cases has not been reached like before the pandemic.

b) Root Problems (Causes)

1. Online lecture system, many students cannot join the program development of soft skills, skills, due to the presence of students not in hospitals, but in their hometowns and even outside the province.
2. Restrictions on participants in supporting activities that are mass gathering in nature

c) Driving Factors

During the Covid-19 pandemic the number of patients who came to the hospital was greatly reduced, many patients who had been scheduled for action also rescheduled the schedule for the procedure because the patient was afraid of being swabbed. Limited time and place for discussion between students and supervisors.

d) Inhibiting Factors

1. Restrictions on face-to-face activities reduce interaction between students and patients
2. The area of the room designated for students is still limited, including scientific rooms, thereby reducing discussion time between students and lecturers

e) Control

Control Measures carried out by the Professional Study Program Doctor of the Faculty of Medicine, University of Syiah Kuala:

1. Maximizing learning through offline and online while still paying attention to the quality of students
2. Monitoring the achievement of the GPA score every year, and it is carried out by or together with the Study Program

f) Follow-up Plan

- Optimization of educational services and learning processes

5. RECOMMENDATION

1. Reviewing the selection process for new student admissions to ensure that the Medical Profession Study Program receives quality new student input so that they are able to participate in the learning process and are able to obtain maximum learning outcomes.
2. Monitoring the achievement of the GPA value every year, and it is carried out by or together with the Study Program which really knows everything that happens in the Study Program, which can be one of the factors causing fluctuations in the average student GPA score
3. Monitoring and evaluating the learning process carried out, related to the presence of lecturers and students, availability of lesson plans, learning processes carried out in accordance with lesson plans, materials, references and other matters related to the learning process